

Classic Series



Elevation A

The Sydney

*3 Bedroom, 2 1/2 Bath,
Living Room, Large Kitchen
with Nook, Master Suite
with Walk-In Closet*

The front of the home may be reversed from this picture and may also show other upgraded items. Brick is standard on the exterior. Please contact us to find out which items are optional.



Elevation B

The front of the home may be reversed from this picture and may also show other upgraded items. Brick is standard on the exterior. Please contact us to find out which items are optional.

This two story home features 3 large bedrooms all with large walk-in closets. This home also has an easy access laundry area, and not only a large kitchen, but a very large

nook area for comfortable dining. Also included is an oversized living room with optional fireplace. There is a feeling of elegance for anyone who owns this home.

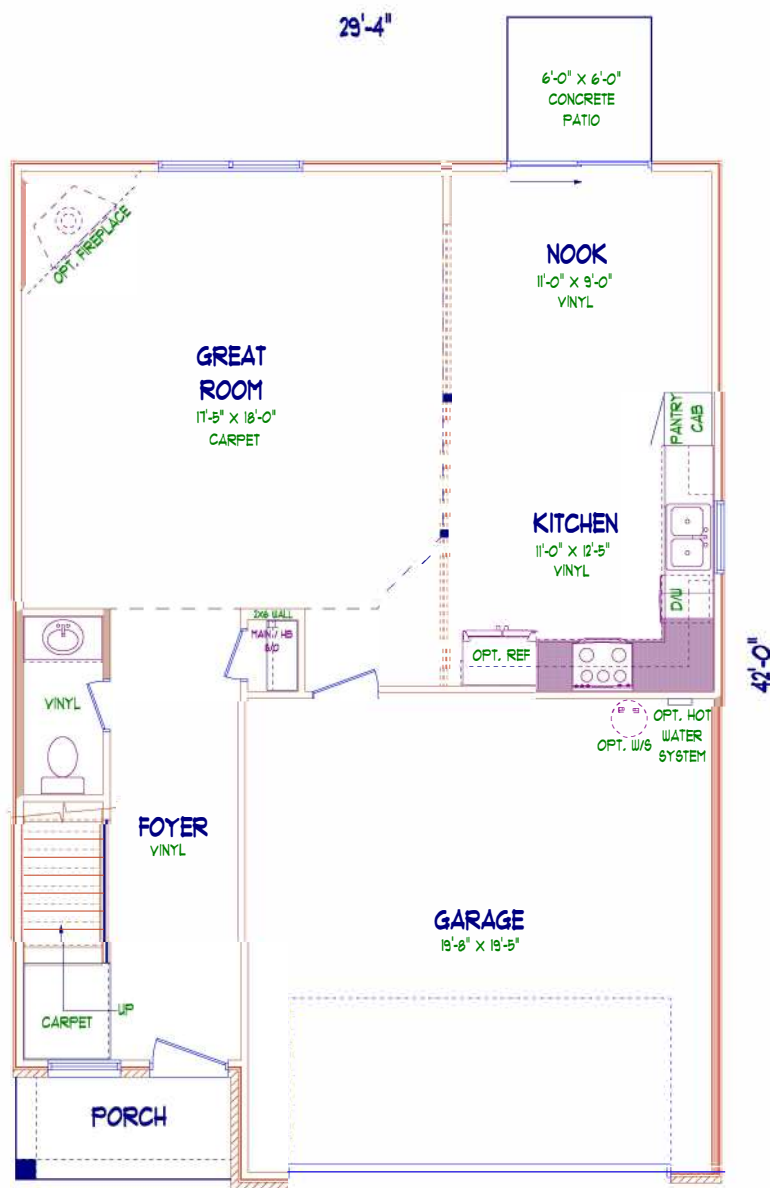
Copyright 2010. Paul Shoopman Home Building Group. The floor plan or optional basement brochure shown above is a conceptual floor plan. The elevation rendering is also a conceptual view of the home. Prices, plans, dimensions and specifications are subject to change without notice.



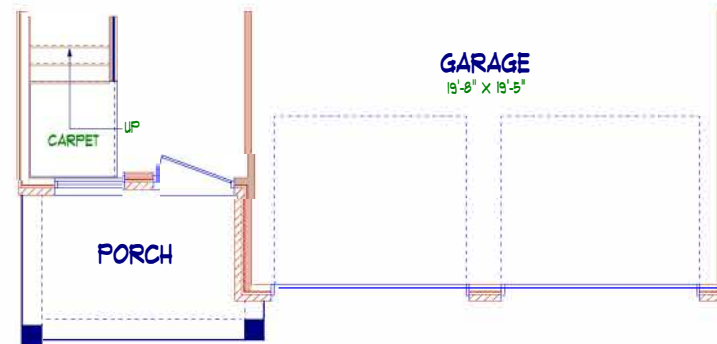
All Paul Shoopman Home Building Group offers and sales promotions are subject to specific rules, restrictions, time periods and limited quantities; and may be changed or withdrawn without notice at any time. Ask sales consultant for details.

11685 West Road - Zionsville, IN 46077 - (P) 1.855.999.3872 - shoopmanhomes.com

The Sydney



1ST FLOOR
PLAN
ELEVATION "A"



ELEVATION "B"

'THE SYDNEY' - RH

CLASSIC SERIES BY:

shoopmanhomes.com

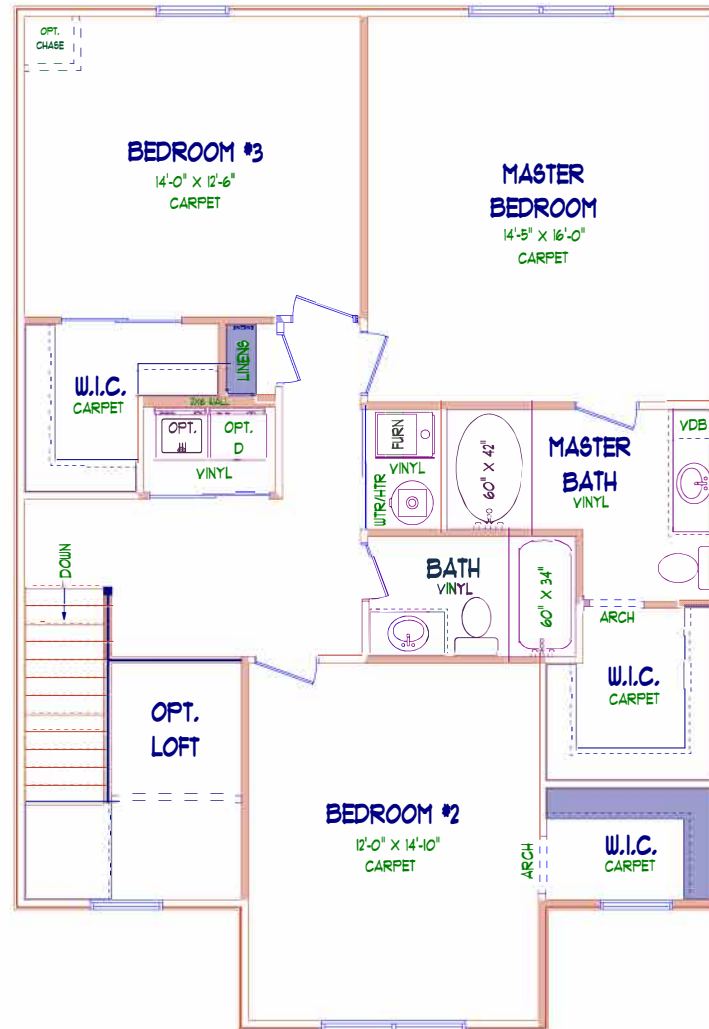
Shoopman
Homes

1-855-999-3872

6/7/19

THE FLOOR PLAN OR OPTIONAL BASEMENT BROCHURE IS A CONCEPTUAL VIEW OF THE HOME. PRICES, PLANS AND SPECIFICATIONS ARE SUBJECT TO CHANGE WITHOUT NOTICE.

The Sydney



2ND FLOOR PLAN

'THE SYDNEY' - RH

CLASSIC SERIES BY:

shoopmanhomes.com

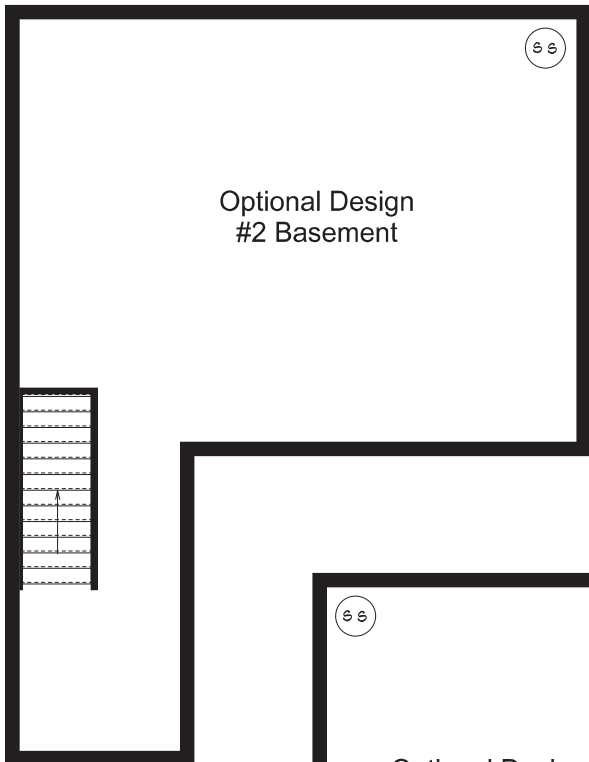
Shoopman
Homes

1-855-999-3872

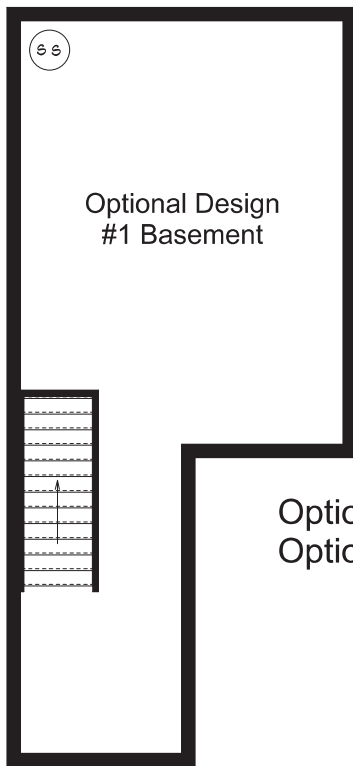
6/7/19

THE FLOOR PLAN OR OPTIONAL BASEMENT BROCHURE IS A CONCEPTUAL VIEW OF THE HOME. PRICES, PLANS AND SPECIFICATIONS ARE SUBJECT TO CHANGE WITHOUT NOTICE.

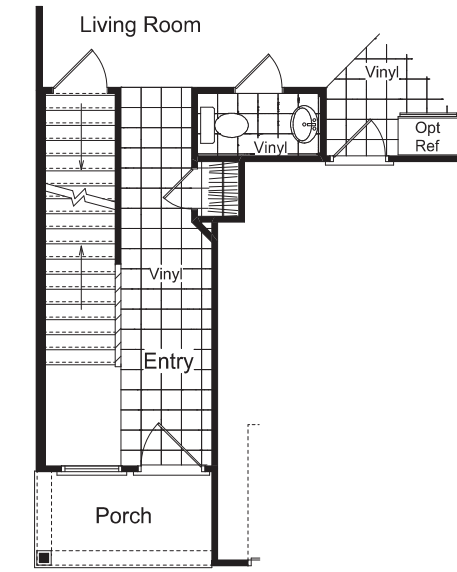
The Sydney



Optional Design #2 Basement



Optional Design #1 Basement



Partial First Floor Plan

Optional Design #1 Basement = 530 Sq Ft
 Optional Design #2 Basement = 791 Sq Ft

Sydney Basement Brochure
 9/25/10

©

The Floor Plan or Optional Basement Brochure is a conceptual view of the home.
 Prices, plans and specifications are subject to change without notice.

shoopmanhomes.com

Shoopman Homes

1-855-999-3872

Copyright 2010. Paul Shoopman Home Building Group. The floor plan or optional basement brochure shown above is a conceptual floor plan. The elevation rendering is also a conceptual view of the home. Prices, plans, dimensions and specifications are subject to change without notice. All Paul Shoopman Home Building Group offers and sales promotions are subject to specific rules, restrictions, time periods and limited quantities; and may be changed or withdrawn without notice at any time. Ask sales consultant for details.

