

# Majestic Series



The front of the home may be reversed from this picture and may also show other upgraded items. Brick is standard on the exterior. Please contact us to find out which items are optional.

This classy, three-bedroom ranch home offers many amenities usually found in a custom designed layout. There is a Master bedroom with a full bath and walk-in closet, 2 additional Bedrooms, and an additional Bath and a Kitchen/Nook. A Family room with optional cathedral ceiling and optional fireplace makes for a great gathering place for fun and relaxation. This layout offers a truly functional design and affordability in a very attractive way.

## The Hanover

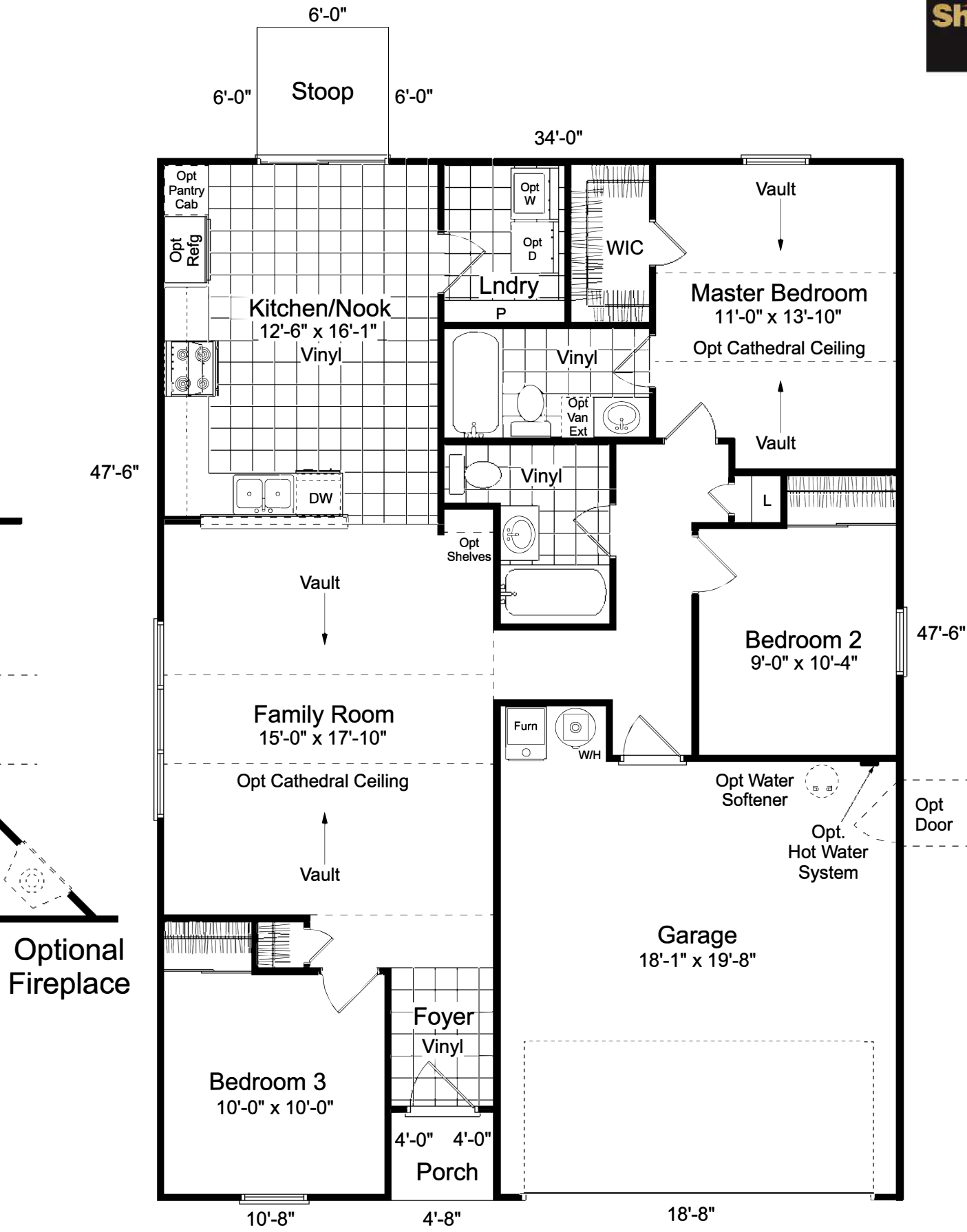
*3-Bedroom, 2-Bath, Family Room,  
Kitchen/Nook, Laundry Room,  
2-Car Garage*

Copyright 2010. Paul Shoopman Home Building Group. The floor plan or optional basement brochure shown above is a conceptual floor plan. The elevation rendering is also a conceptual view of the home. Prices, plans, dimensions and specifications are subject to change without notice.



*Builder Distinguishing Awards*

All Paul Shoopman Home Building Group offers and sales promotions are subject to specific rules, restrictions, time periods and limited quantities; and may be changed or withdrawn without notice at any time. Ask sales consultant for details.



# The Hanover

## Hanover Brochure

The Floor Plan is a conceptual view of the home.  
 Prices, plans and specifications are subject to change without notice.

Copyright 2010. Paul Shoopman Home Building Group. The floor plan or optional basement brochure shown above is a conceptual floor plan. The elevation rendering is also a conceptual view of the home. Prices, plans, dimensions and specifications are subject to change without notice. All Paul Shoopman Home Building Group offers and sales promotions are subject to specific rules, restrictions, time periods and limited quantities; and may be changed or withdrawn without notice at any time. Ask sales consultant for details.