

# Presidential Series



Elevation T

The front of the home may be reversed from this picture.

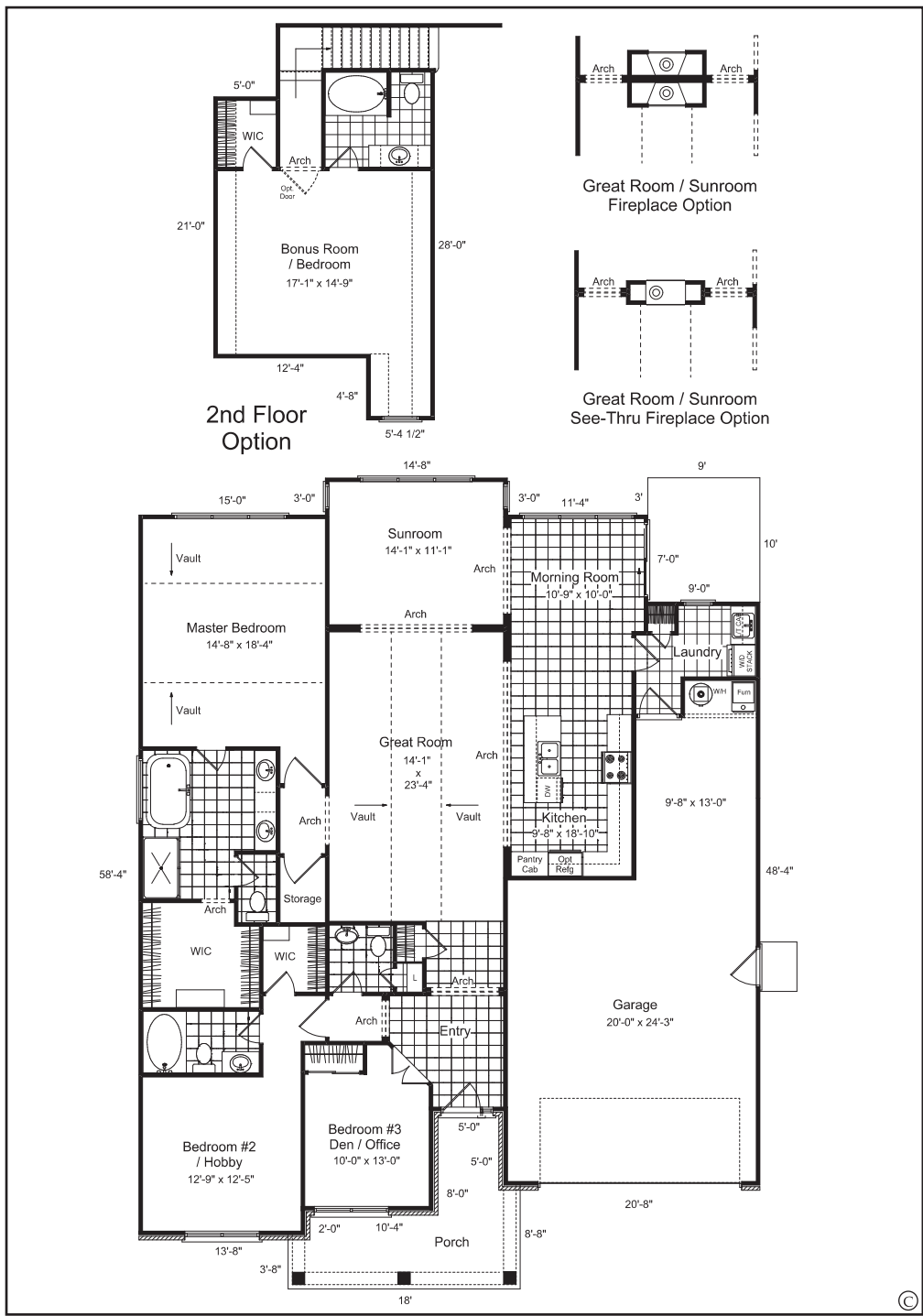
You'll find the best of both worlds in this beautifully designed, Ranch home with an optional 2nd floor. The spacious Great Room provides a way for everyone to enjoy their favorite activities. You can quietly read in the optional Den/Office, Bedroom, while others loudly root their favorite team to victory in the Great Room. On the main floor you will discover a large Master Bedroom featuring a huge walk-in closet and roomy Master Bath. In choosing the optional 2nd floor, you will add an additional bonus room/Bedroom, walk-in closet and Bathroom. You will truly enjoy showing off this home to your friends.

## The Jefferson 2,100 Sq. Ft. + opt 477 Sq. Ft. Bonus

*3-Bedroom or 2 Bedroom  
with Den, 2 1/2 Bath, Great  
Room, Morning Room, Sun  
Room, Master Garden Bath,  
Laundry Room, 3-Car Garage  
and an Optional second story  
that includes a Bonus Room/  
Bedroom, WIC and Bath*



[shoopmanhomes.com](http://shoopmanhomes.com)



Community

Homesite#

Customer

PRINTED

SIGNATURE/DATE

Co-customer

PRINTED

SPECIAL NOTES:

(Check One)

Std. Concrete Slab \_\_\_\_\_ Opt. Crawl \_\_\_\_\_  
 Opt. Bsmt #1 \_\_\_\_\_ Opt. Bsmt #2 \_\_\_\_\_  
 Opt. Bsmt #3 \_\_\_\_\_

CUSTOMER SELECTED  
 CHANGES AND OPTIONS

# The Jefferson

3-Bedroom or 2 Bedroom with Den, 2 1/2 Bath, Great Room, Morning Room, Sun Room, Master Garden Bath, Laundry Room, 3-Car Garage and an Optional second story that includes a Bonus Room/Bedroom, WIC and Bath

Ask about our  
 guaranteed existing home  
 buyout program!



