

shoopmanhomes.com



Shoopman
Homes

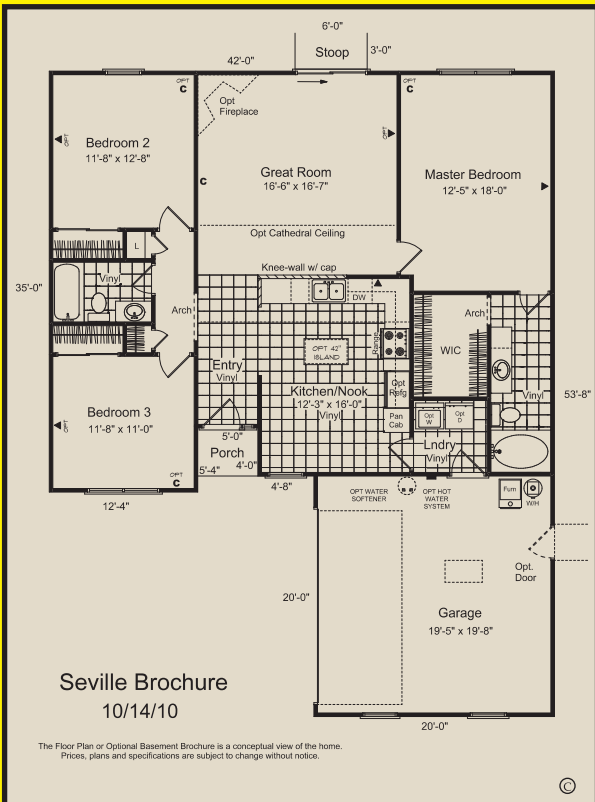
1-877-474-6676



MONARCH SPRINGS

THE HIDDEN GEM OF HAMILTON COUNTY.

- 10,000 Sq. Ft.
- New Home Show Room
- Free Mortgage Qualifier
- Free Credit Check
- So Long Landlord
- Tired of Renting?



Log on
for a Virtual Tour
www.shoopmanhomes.com

Why
Rent?

\$795*
Monthly Payments

Ask about our
40-10
Program

Seville
Model open 7 days a week
Call today for your showing

Minimum Combined Family Income Needed (before taxes) for THIS Home			
Minimum Household Annual	Minimum Household Monthly	Minimum Household Weekly	Minimum Two Hourly Working Household Income
\$36,436	\$3,036	\$701.00	\$8.75 \$8.75

*All Paul Shoopman Home Building Group offers, prices and sales promotions are subject to specific rules, restrictions, time periods and limited quantities; and may be changed or withdrawn without notice at any time. Ask sales consultant for details. Offer expires January 31, 2012. All referrals must be in writing and dated. They must be received prior to the date that the referred buyer contacts Paul Shoopman Home Building Group on their own, or are referred by another source. This program cannot be combined with any other program and is not retroactive. This program is subject to change and may be withdrawn at any time. Only applicable with full price offer. *Payments estimated on a FHA 30 year Fixed rate at 3.875% Principal and interest only. 4.62% APR with a 3.5% down payment. Calculations based on sale price of \$150,900.



MONARCH SPRINGS

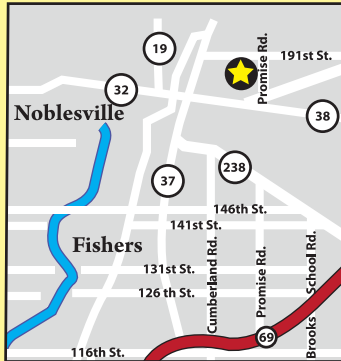
THE HIDDEN GEM OF HAMILTON COUNTY.

- Monarch Springs features single family ranch and two-story homes that are perfect for young families or couples just starting out. Our Classic Series and Presidential "D" Series of homes are the centerpiece of this neighborhood and offer buyers elegant architecture and interior designs all at an affordable price.
- This beautiful "family-friendly" community is convenient to shopping and dining, convenient to I-69, and just minutes from Historic Downtown Noblesville
- Located on South side of 191st Street, East of St. Rd. 37 in Noblesville, Monarch Springs has it all wrapped up in one convenient and highly desirable location. We are just minutes from shopping and dining at the "upscale" Hamilton Town Center.

* All Shoopman Homes have a Diamond 2-10 Home Buyer's Warranty.

*Indianapolis' #1 referral program.

Monarch Springs:
10898 Field Crescent Circle
Noblesville, IN 46060
Phone/Fax: 317-773-0348
1-877-4-Shoopman
(1-877-474-6676)



*Payments estimated on a FHA 30 year Fixed rate at 3.875%
Principal and interest only. 4.62% APR with a 3.5% down payment.

Save as You Go Program available.



- Brand New 7,000 sq. ft. Paul Shoopman (New Home) Showroom.
- You will be amazed at the top-of-line design and features of this gorgeous showroom.
- Industry-leading facility - that features hundreds of design options and upgrades for your home.

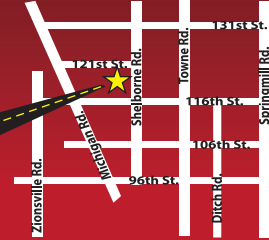


newhome
showroom

Located at 121st St. and Shelburne Rd.
12070 Abney Run Dr.
Zionsville, IN 46077
1-877-4-SHOOPMAN (1-877-474-6676)



- This unique Showroom Experience is one-of-a-kind and is now open to the Public.
- Browsing Hours are available 7 Days A Week
Mon. - Wed. 8-5 pm Saturday 8-5 pm
Thurs. - Fri. 8-7 pm Sunday 8-5 pm



We're only a click away on Mapquest



12070 Abney Run Dr.
Zionsville, IN 46077