

shoopmanhomes.com

Shoopman Homes

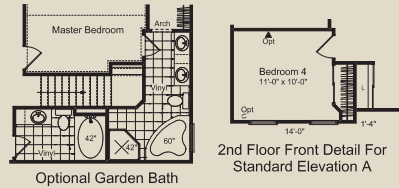
1-877-474-6676

HAWK'S LANDING

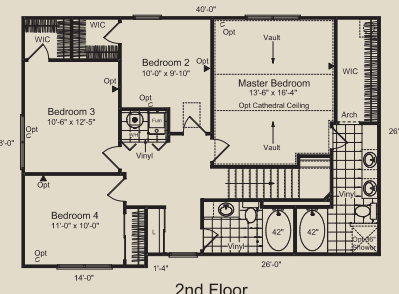
Why Rent?



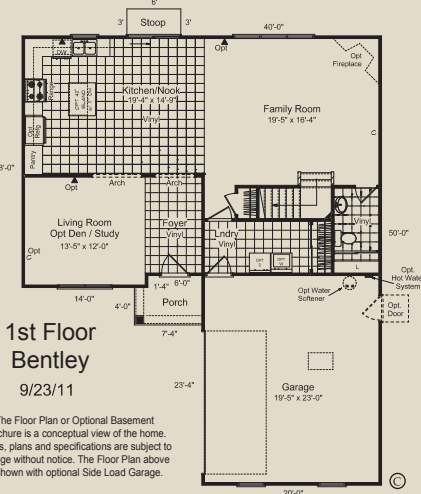
Bentley
Model open 7 days a week
Call today for your showing



2nd Floor Front Detail For Standard Elevation A



2nd Floor



1st Floor Bentley
9/23/11

The Floor Plan or Optional Basement Brochure is a conceptual view of the home. Prices, plans and specifications are subject to change without notice. The Floor Plan above is shown with optional Side Load Garage.

For a larger view of this floorplan visit shoopmanhomes.com

- 7,000 Sq. Ft.
- New Home Show Room
- Free Mortgage Qualifier
- Free Credit Check
- So Long Landlord
- Tired of Renting?

Ask about our 40-10 Program

\$884*
Monthly Payments

Minimum Combined Family Income Needed (before taxes) for THIS Home

Minimum Household Annual	Minimum Household Monthly	Minimum Household Weekly	Minimum Two Hourly Working Household Income
\$67,200	\$5,600	\$1,292.00	\$16.20 \$16.20

*All Paul Shoopman Home Building Group offers, prices and sales promotions are subject to specific rules, restrictions, time periods and limited quantities; and may be changed or withdrawn without notice at any time. Ask sales consultant for details. Offer expires February 29, 2012. All referrals must be in writing and dated. They must be received prior to the date that the referred buyer contacts Paul Shoopman Home Building Group on their own, or are referred by another source. This program cannot be combined with any other program and is not retroactive. This program is subject to change and may be withdrawn at any time. Only applicable with full price offer. *Payments estimated on a FHA 30 year Fixed rate at 3.875% Principal and interest only. 4.62% APR with a 3.5% down payment. Calculations based on sale price of \$192,900.

HAWK'S LANDING

- This has got to be one of the most desirable locations in Fishers, recently voted as the "Top Place in the Nation to Raise a Family". This location could not be better for schools, shopping, dining, hospital care, water recreation.
- Hawks Landing offers you a choice of tree-lined or walk-out basement sites.
- This neighborhood is close to I-69 and convenient to shopping at nearby Fishers and Noblesville. Nearby parks include Fishers Heritage Park at White River and Mudsock Fields.

* All Shoopman Homes have a 2-10 Home Buyer's Warranty.

*Indianapolis' #1 referral program.

Hawks Landing:
12531 Hawks Landing Drive
Fishers, IN 46037
Phone/Fax: 317-733-8480
1-877-4-Shoopman
(1-877-474-6676)



*Payments estimated on a FHA 30 year Fixed rate at 3.875%
Principal and interest only. 4.62% APR with a 3.5% down payment.

Save as You Go Program available.



- Brand New 7,000 sq. ft. Paul Shoopman (New Home) Showroom.
- You will be amazed at the top-of-line design and features of this gorgeous showroom.
- Industry-leading facility - that features hundreds of design options and upgrades for your home.



new home
showroom

Located at 121st St. and Shelborne Rd.
12070 Abney Run Dr.
Zionsville, IN 46077
1-877-4-SHOOPMAN (1-877-474-6676)



- This unique Showroom Experience is one-of-a-kind and is now open to the Public.
- Browsing Hours are available 7 Days A Week
Mon. - Wed. 8-5 pm Saturday 8-5 pm
Thurs. - Fri. 8-7 pm Sunday 12-5 pm



We're only a click away on Mapquest



12070 Abney Run Dr.
Zionsville, IN 46077