

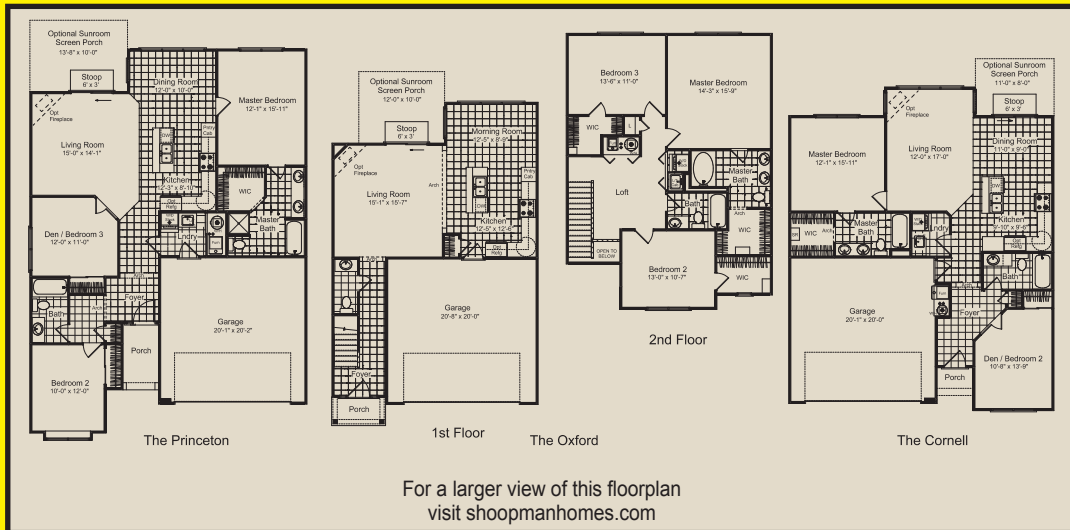


Countryside

- 7,000 Sq. Ft. New Home Show Room
- Free Mortgage Qualifier
 - Free Credit Check
 - So Long Landlord
 - Tired of Renting?

Ask about our
40-10
Program

Log on
for a Virtual Tour
www.shoopmanhomes.com



For a larger view of this floorplan
visit shoopmanhomes.com

Minimum Combined Family Income Needed (before taxes) for THIS Payment

	Minimum Household Annual	Minimum Household Monthly	Minimum Household Weekly	Minimum Two Hourly Working Household Income
Princeton	\$24,228	\$2,019	\$470.00	\$5.87 \$5.87
Oxford	\$25,920	\$2,160	\$502.00	\$6.28 \$6.28
Cornell	\$21,996	\$1,833	\$426.00	\$5.33 \$5.33

*All Paul Shoopman Home Building Group offers, prices and sales promotions are subject to specific rules, restrictions, time periods and limited quantities; and may be changed or withdrawn without notice at any time. Ask sales consultant for details. Offer expires February 29, 2012. All referrals must be in writing and dated. They must be received prior to the date that the referred buyer contacts Paul Shoopman Home Building Group on their own, or are referred by another source. This program cannot be combined with any other program and is not retroactive. This program is subject to change and may be withdrawn at any time. Only applicable with full price offer. *Payments estimated on a FHA 30 year Fixed rate at 3.875% Principal and interest only. 4.62% APR with a 3.5% down payment. Calculations based on sale price of P \$129,900, O \$138,900 and C \$117,900.



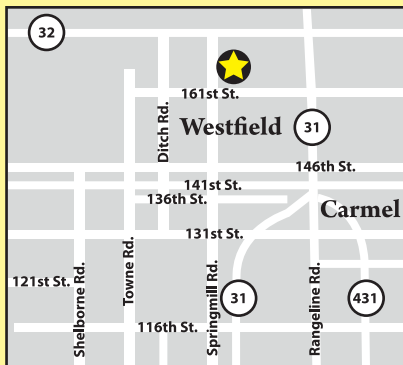
Countryside

- From active adults in search of low-maintenance living to singles and couples looking for quality and affordability starting from the \$130's.
- This "activity-friendly" community features 125 acres of beautiful landscaped greens, swimming pools and picnic area, basketball, tennis, and volleyball courts, 50 acres of natural wildlife habitat, 8 miles of hiking trails, 40 acres of stocked lakes for fishing
- Located on East side of Springmill Rd., North of 161st Street, Countryside is within walking distance of Springmill Commons Shopping Center of Westfield and just minutes from shopping and dining at Clay Terrace. Countryside is the place for outdoor adventure and activity...and, it is all right outside your back door.

* All Shoopman Homes have a Diamond 2-10 Home Buyer's Warranty.

*Indianapolis' #1 referral program.

Countryside:
161 Coatsville Drive
Westfield, IN 46074
Phone/Fax: 317-896-5544
1-877-4-Shoopman
(1-877-474-6676)



*Payments estimated on a FHA 30 year Fixed rate at 3.875%
Principal and interest only. 4.62% APR with a 3.5% down payment.

Save as You Go Program available.



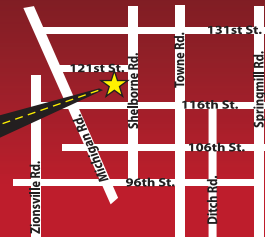
- Brand New 7,000 sq. ft. Paul Shoopman (New Home) Showroom.
- You will be amazed at the top-of-line design and features of this gorgeous showroom.



- Industry-leading facility - that features hundreds of design options and upgrades for your home.
- This unique Showroom Experience is one-of-a-kind and is now open to the Public.
- Browsing Hours are available 7 Days A Week
Mon. - Wed. 8-5 pm Saturday 8-5 pm
Thurs. - Fri. 8-7 pm Sunday 12-5 pm

newhome
showroom

Located at 121st St. and Shelborne Rd.
12070 Abney Run Dr.
Zionsville, IN 46077
1-877-4-SHOOPMAN (1-877-474-6676)



We're only a click away on Mapquest



12070 Abney Run Dr.
Zionsville, IN 46077