

shoopmanhomes.com

Shoopman
Homes

1-877-474-6676



BROOKFIELD PLACE

AFFORDABLE LUXURY HOMES AT A CONVENIENT INDIANAPOLIS LOCATION

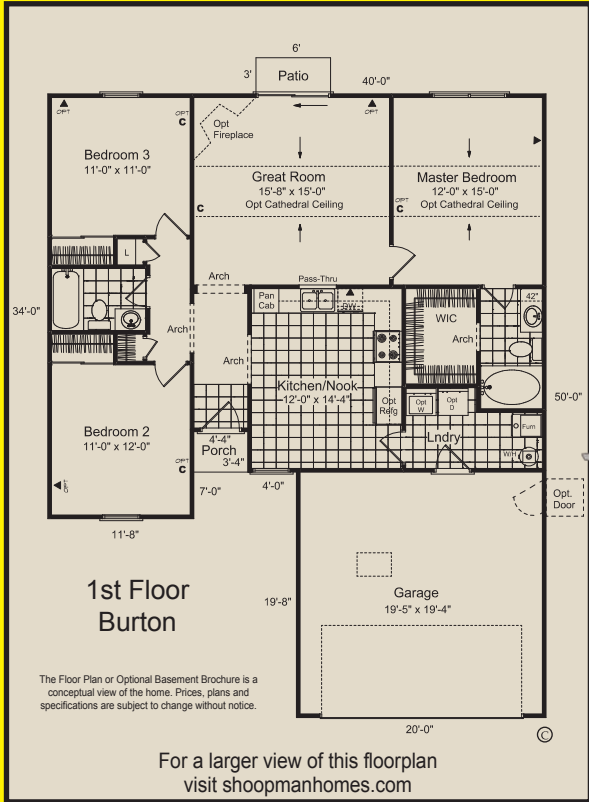
Log on
for a Virtual Tour
www.shoopmanhomes.com

Why
Rent?



Burton
Model open 7 days a week
Call today for your showing

Ask about our
40-10
Program



Immediate Occupancy

\$622*
Monthly Payments

\$545*
Monthly Payments

Minimum Combined Family Income Needed (before taxes) for THIS Payment

| Minimum Household Annual | Minimum Household Monthly | Minimum Household Weekly | Minimum Two Hourly Working Household Income |
|--------------------------|---------------------------|--------------------------|---|
| \$27,780 | \$2,315 | \$534.00 | \$6.68 \$6.68 |

*All Paul Shoopman Home Building Group offers, prices and sales promotions are subject to specific rules, restrictions, time periods and limited quantities; and may be changed or withdrawn without notice at any time. Ask sales consultant for details. Offer expires February 29, 2012. All referrals must be in writing and dated. They must be received prior to the date that the referred buyer contacts Paul Shoopman Home Building Group on their own, or are referred by another source. This program cannot be combined with any other program and is not retroactive. This program is subject to change and may be withdrawn at any time. Only applicable with full price offer. *Payments estimated on a FHA 30 year Fixed rate at 3.875% Principal and interest only. 4.62% APR with a 3.5% down payment. Calculations based on sale price of \$118,900 (Burton), \$135,900 (Bismark).



BROOKFIELD PLACE

AFFORDABLE LUXURY HOMES AT A CONVENIENT INDIANAPOLIS LOCATION

- Brookfield Place features single family ranch and two-story homes that are perfect for families, couples or singles just starting out. Our Classic Series homes are the centerpiece of this neighborhood and offer buyers elegant architecture and interior designs all at an affordable price.
- This beautiful community is convenient to shopping, dining, and recreation, convenient to I-465; I-74, and I-70 and is an easy commute to downtown.
- Located on West side of Franklin Road, South of Raymond Street in Indianapolis, Brookfield Place has it all wrapped up in one convenient and highly desirable location.

* All Shoopman Homes have a Diamond 2-10 Home Buyer's Warranty.

*Indianapolis' #1 referral program.

Brookfield Place:
8121 Colewood Blvd.
Indianapolis, IN 46239
Phone/Fax: 317-356-2247
1-877-4-Shoopman
(1-877-474-6676)



*Payments estimated on a FHA 30 year Fixed rate at 3.875%
Principal and interest only. 4.62% APR with a 3.5% down payment.

Save as You Go Program available.



- Brand New 7,000 sq. ft. Paul Shoopman (New Home) Showroom.
- You will be amazed at the top-of-line design and features of this gorgeous showroom.
- Industry-leading facility - that features hundreds of design options and upgrades for your home.



newhome showroom

Located at 121st St. and Shelborne Rd.
12070 Abney Run Dr.
Zionsville, IN 46077
1-877-4-SHOOPMAN (1-877-474-6676)



- This unique Showroom Experience is one-of-a-kind and is now open to the Public.
- Browsing Hours are available 7 Days A Week
Mon. - Wed. 8-5 pm Saturday 8-5 pm
Thurs. - Fri. 8-7 pm Sunday 12-5 pm



We're only a click away on Mapquest



12070 Abney Run Dr.
Zionsville, IN 46077