

# Executive Series - Townhomes



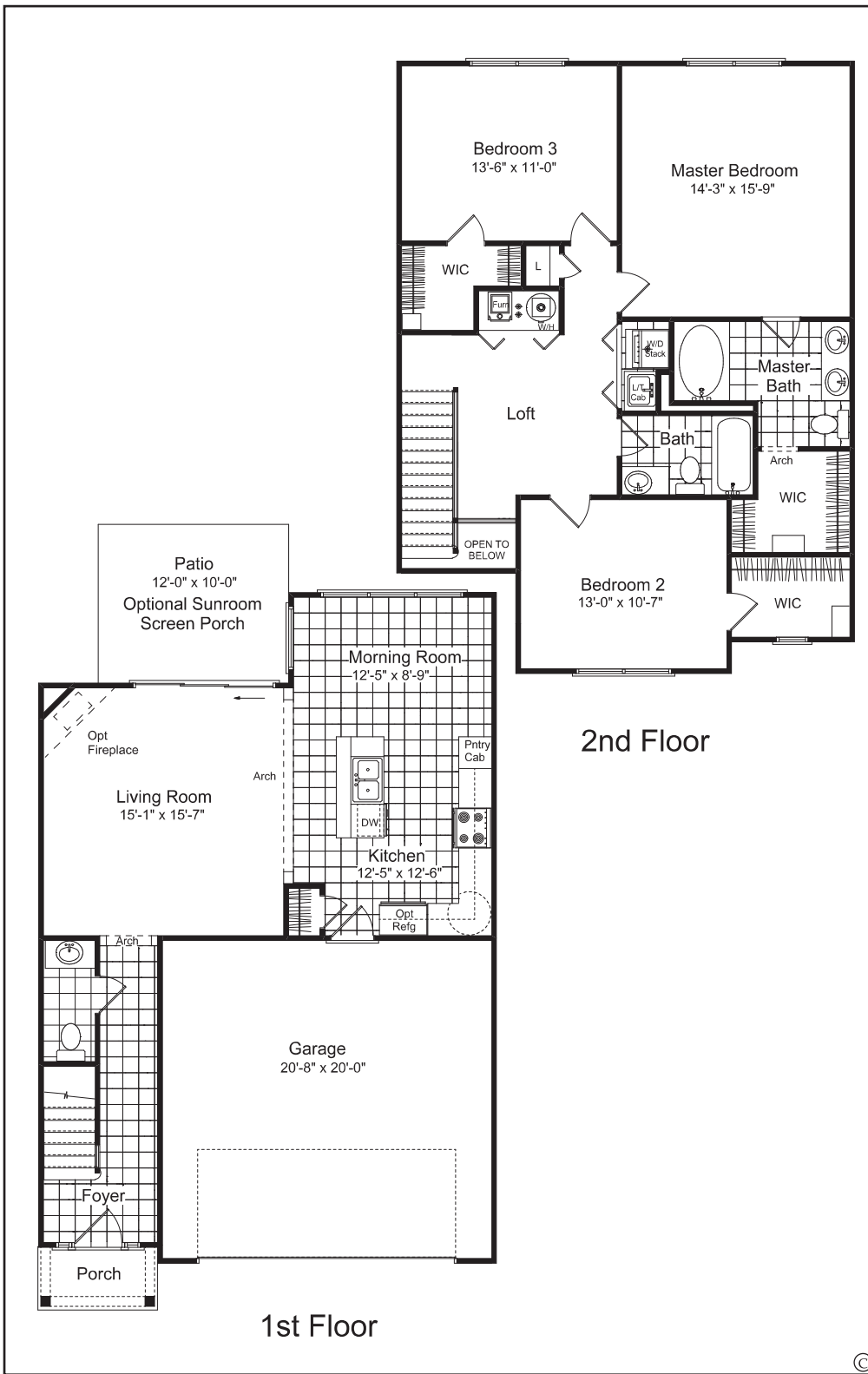
The front of the home may be reversed from this picture.

This 2-story home has an open entry to the 2nd floor balcony. The 3 Bedrooms each have large walk-in closets. This home also has an easy access laundry area, and not only a large Kitchen, but a very large nook area for comfortable dining. There is a feeling of elegance for anyone who owns this home.

**The Oxford**  
**1,759 Sq. Ft.**  
*3 Bedrooms, 2 1/2 Baths,  
Living Room, Dining Room,  
Large Kitchen with Nook,  
Master Suite with Walk-In  
Closet*



[shoopmanhomes.com](http://shoopmanhomes.com)



Community

Homesite#

Customer

PRINTED

SIGNATURE/DATE

Co-customer

PRINTED

SPECIAL NOTES:

(Check One)

Std. Concrete Slab \_\_\_\_\_ Opt. Crawl \_\_\_\_\_  
 Opt. Bsmt #1 \_\_\_\_\_ Opt. Bsmt #2 \_\_\_\_\_  
 Opt. Bsmt #3 \_\_\_\_\_

CUSTOMER SELECTED  
 CHANGES AND OPTIONS

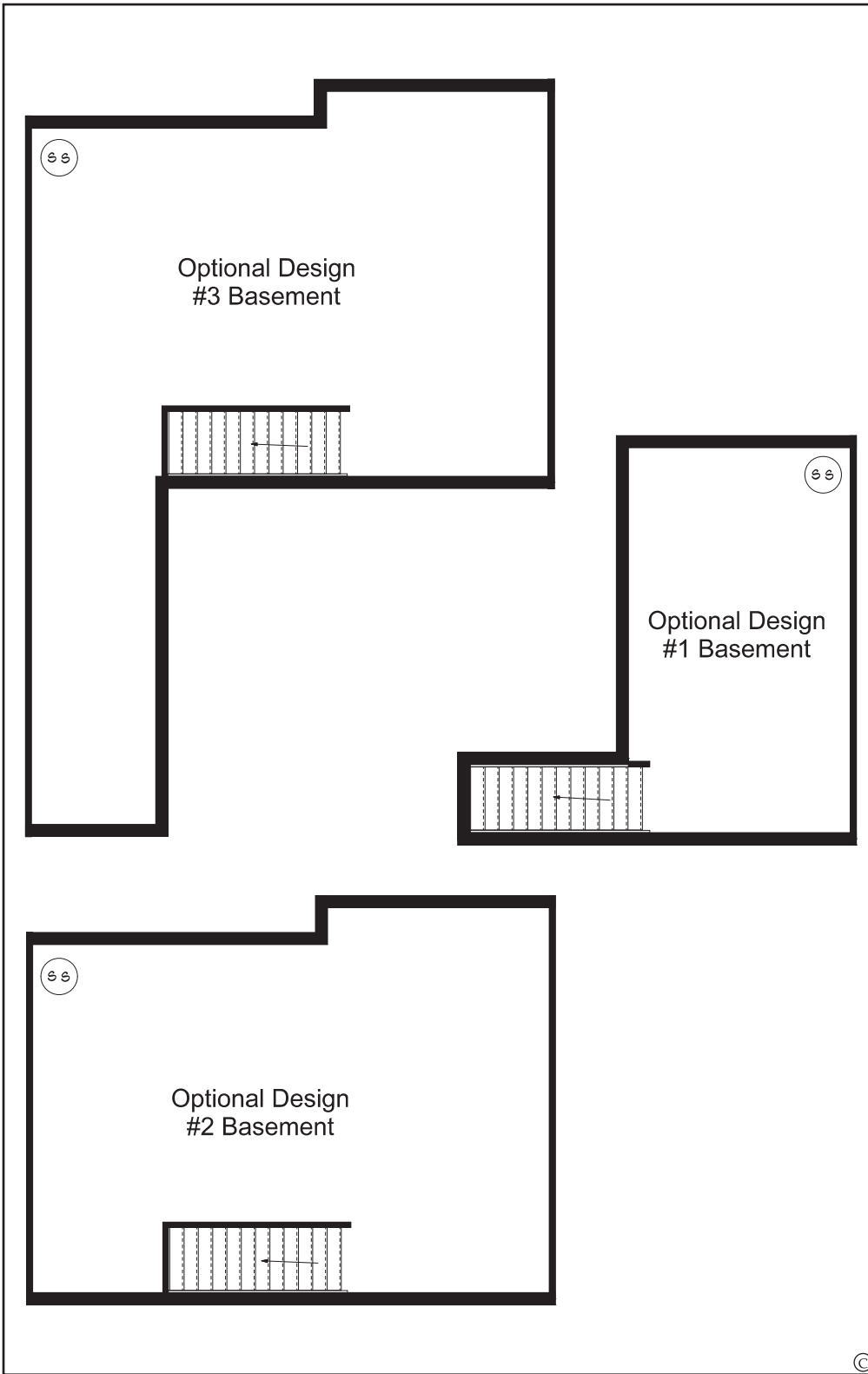
# The Oxford

3 Bedrooms, 2 1/2 Baths, Living Room, Dining Room,  
 Large Kitchen with Nook, Master Suite with Walk-In Closet

(Circle One)  
 Screened Porch - Optional  
 Sunroom - Optional

Ask about our  
 guaranteed existing home  
 buyout program!





Community

Homesite#

Customer

PRINTED

SIGNATURE/DATE

Co-customer

PRINTED

SPECIAL NOTES:

(Check One)

Std. Concrete Slab \_\_\_\_\_ Opt. Crawl \_\_\_\_\_  
 Opt. Bsmt #1 \_\_\_\_\_ Opt. Bsmt #2 \_\_\_\_\_  
 Opt. Bsmt #3 \_\_\_\_\_

CUSTOMER SELECTED  
 CHANGES AND OPTIONS

# The Oxford

3 Bedrooms, 2 1/2 Baths, Living Room, Dining Room,  
 Large Kitchen with Nook, Master Suite with Walk-In Closet

## BASEMENT PLAN (if applicable)

Optional Design #1 Basement = 334 sq. ft.  
 (Includes 2 porcelain lights and 1 4x10 heat registers)  
 Optional Design #2 Basement = 608 sq. ft.  
 (Includes 4 porcelain lights and 2 4x10 heat registers)  
 Optional Design #3 Basement = 755 sq. ft.  
 (Includes 5 porcelain lights and 3 4x10 heat registers)

Ask about our  
 guaranteed existing home  
 buyout program!

