

Classic Series



Elevation J

The front of the home may be reversed from this picture and may also show OTHER UPGRADED items. Brick is standard on exterior. Please contact us to find out which items are optional.

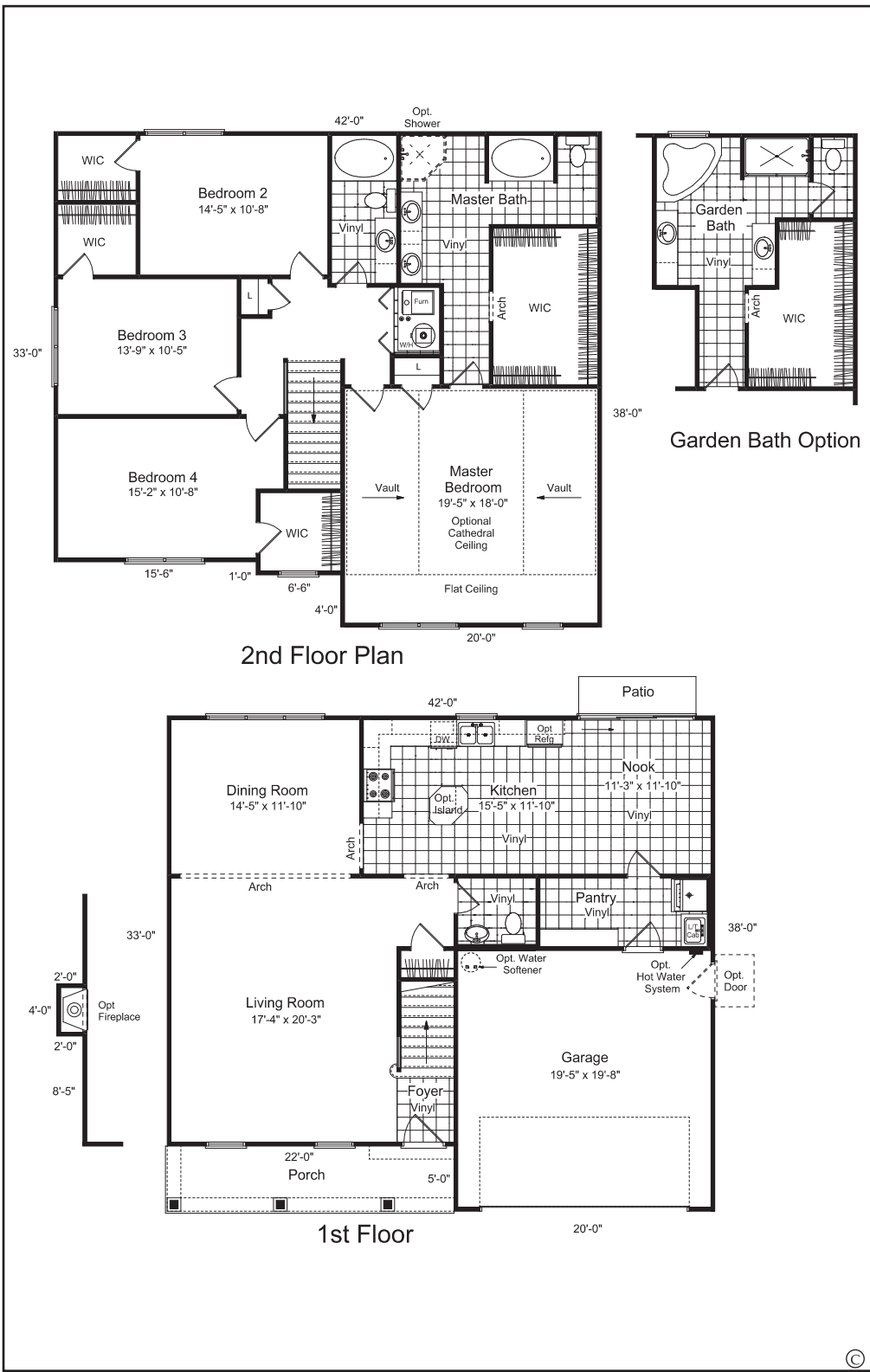
If you're looking for space - this is the home for you! Spanning two stories, this home is loaded with features. The kitchen, with cabinetry throughout, has a cozy nook for dining and a roomy pantry to store all of your essentials. There's also a beautiful dining room to entertain your friends, which connects to an airy living room that's big enough to accommodate everyone. Upstairs, you'll fall in love with our expansive master bedroom suite, complete with large walk-in closet conveniently connected to the luxury bath. You can also add distinction to your master bedroom with an optional cathedral ceiling. You will find a place for everything in this majestic home.

The Monticello "D" 2,543 Sq. Ft.

*4 bedroom, 2 1/2 bath,
Two-Story, King-Sized
Master Suite, Living Room,
Dining Room, Kitchen/Nook*



shoopmanhomes.com



Community

Homesite#

Customer

PRINTED

SIGNATURE/DATE

Co-customer

PRINTED

SPECIAL NOTES:

(Check One)

Std. Concrete Slab _____ Opt. Crawl _____
 Opt. Bsmt #1 _____ Opt. Bsmt #2 _____
 Opt. Bsmt #3 _____

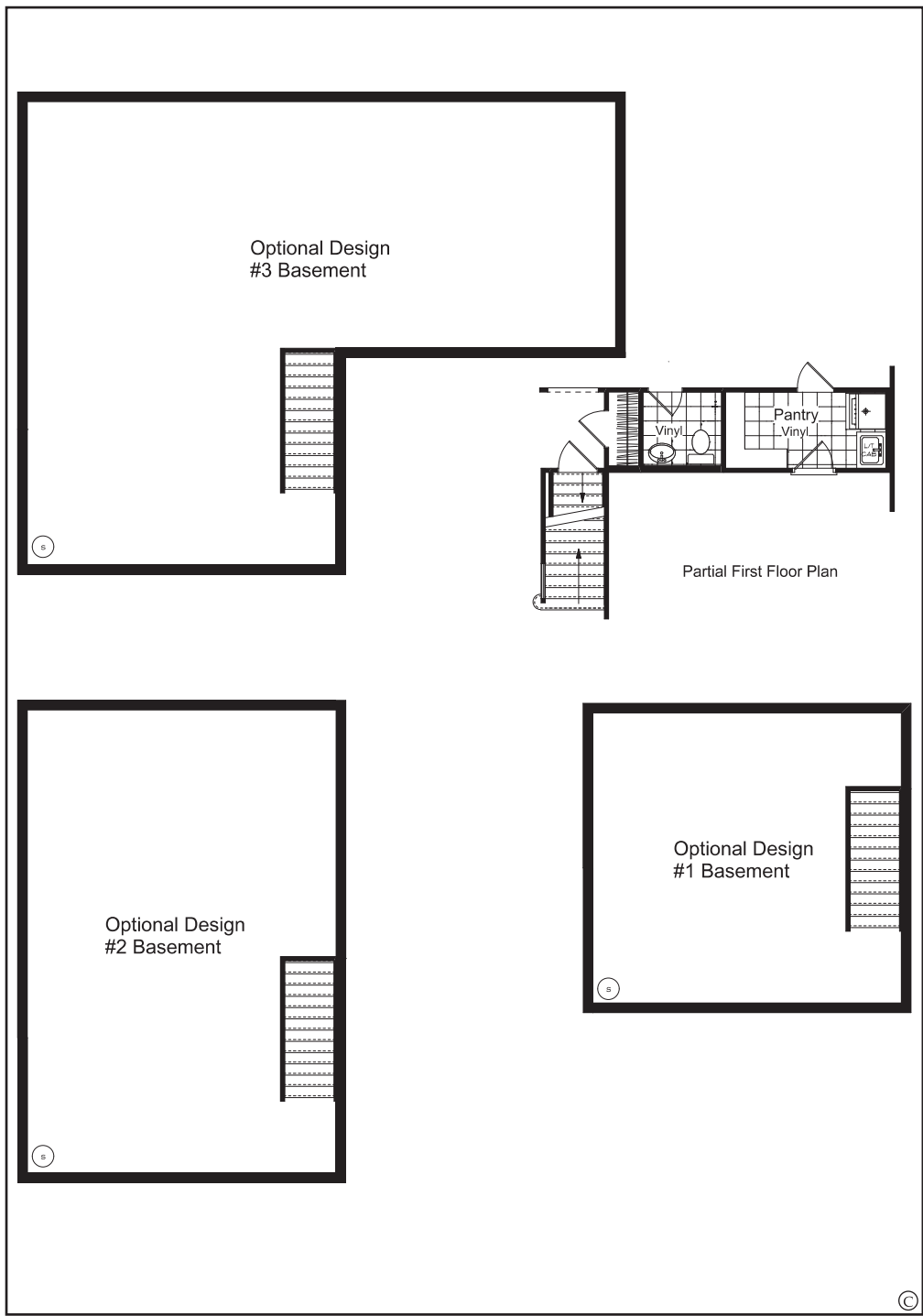
CUSTOMER SELECTED
 CHANGES AND OPTIONS

The Monticello "D"

4 bedroom, 2 1/2 Bath, Two-Story, King-Sized Master Suite,
 Living Room, Dining Room, Kitchen/Nook

Ask about our
 guaranteed existing home
 buyout program!





Community

Homesite#

Customer

PRINTED

SIGNATURE/DATE

Co-customer

PRINTED

SPECIAL NOTES:

(Check One)

- Std. Concrete Slab _____ Opt. Crawl _____
- Opt. Bsmt #1 _____ Opt. Bsmt #2 _____
- Opt. Bsmt #3 _____

CUSTOMER SELECTED CHANGES AND OPTIONS

The Monticello "D"

2 Story, 4 Bedrooms, 2 1/2 Baths, Two-Story, King-Sized Master Suite, Living Room, Dining Room, Kitchen/Nook

BASEMENT PLAN (if applicable)

- Optional Design #1 Basement = 485 sq. ft.
(Includes 3 porcelain lights and 2 4x10 heat registers)
- Optional Design #2 Basement = 756 sq. ft.
(Includes 5 porcelain lights and 3 4x10 heat registers)
- Optional Design #3 Basement = 1,110 sq. ft.
(Includes 7 porcelain lights and 4 4x10 heat registers)

Ask about our guaranteed existing home buyout program!

