

Classic Series



Elevation L

The Franklin "D"

3,559 Sq. Ft.

*4 Bedroom Two-Story,
2 1/2 Bath, Spacious
Living Room, Family
Room and Dining Room
with Dining Nook*

The front of the home may be reversed from this picture.



Elevation J



Elevation I



Elevation K



Elevation B

If you've been looking for a home with loads of space, this is the home for you! On the first floor, a large kitchen sets the tone, complete with a nook for dining and a pantry for storage. Just off the kitchen, you'll find a spacious dining room that's perfect for entertaining family and friends. Both the family room and living room are sized to hold a crowd, so you can show them

off to everyone you know. Upstairs, the bonus room provides yet another gathering spot and compliments the large master bedroom, two baths and three bedrooms on the second story. You also have the option of turning the fourth bedroom into an office, providing everyone in your household with plenty of space to call their own. Move up to more room in this space-conscious home.



Community

Homesite #

Customer

PRINTED

SIGNATURE/DATE

Co-customer

PRINTED

SIGNATURE/DATE

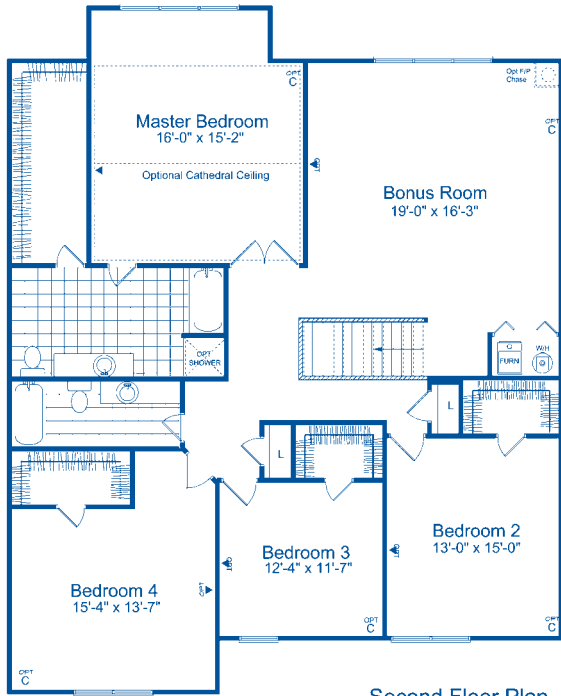
SPECIAL NOTES:

(Check One)

Std. Concrete Slab _____ Opt. Crawl _____
 Opt. Bsmt #1 _____ Opt. Bsmt #2 _____
 Opt. Bsmt #3 _____

CUSTOMER SELECTED CHANGES AND OPTIONS

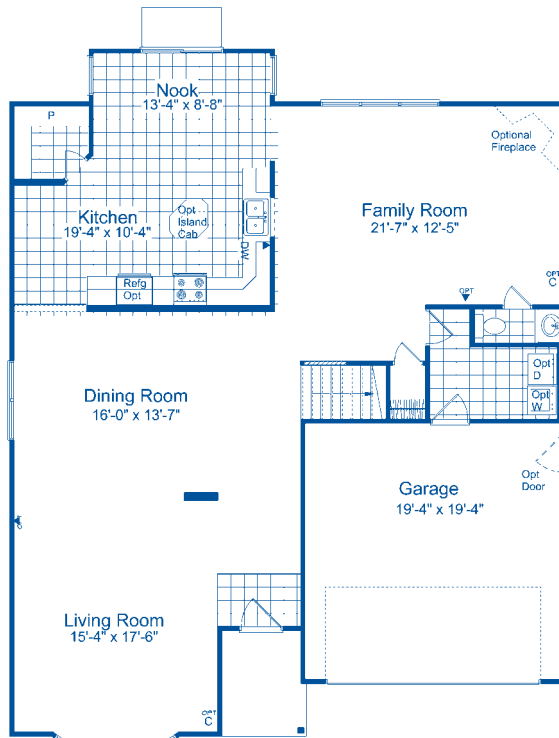
© Floor Plan / Elevation A / With Optional Basement



Second Floor Plan



Optional Elevation 'B'



First Floor Plan

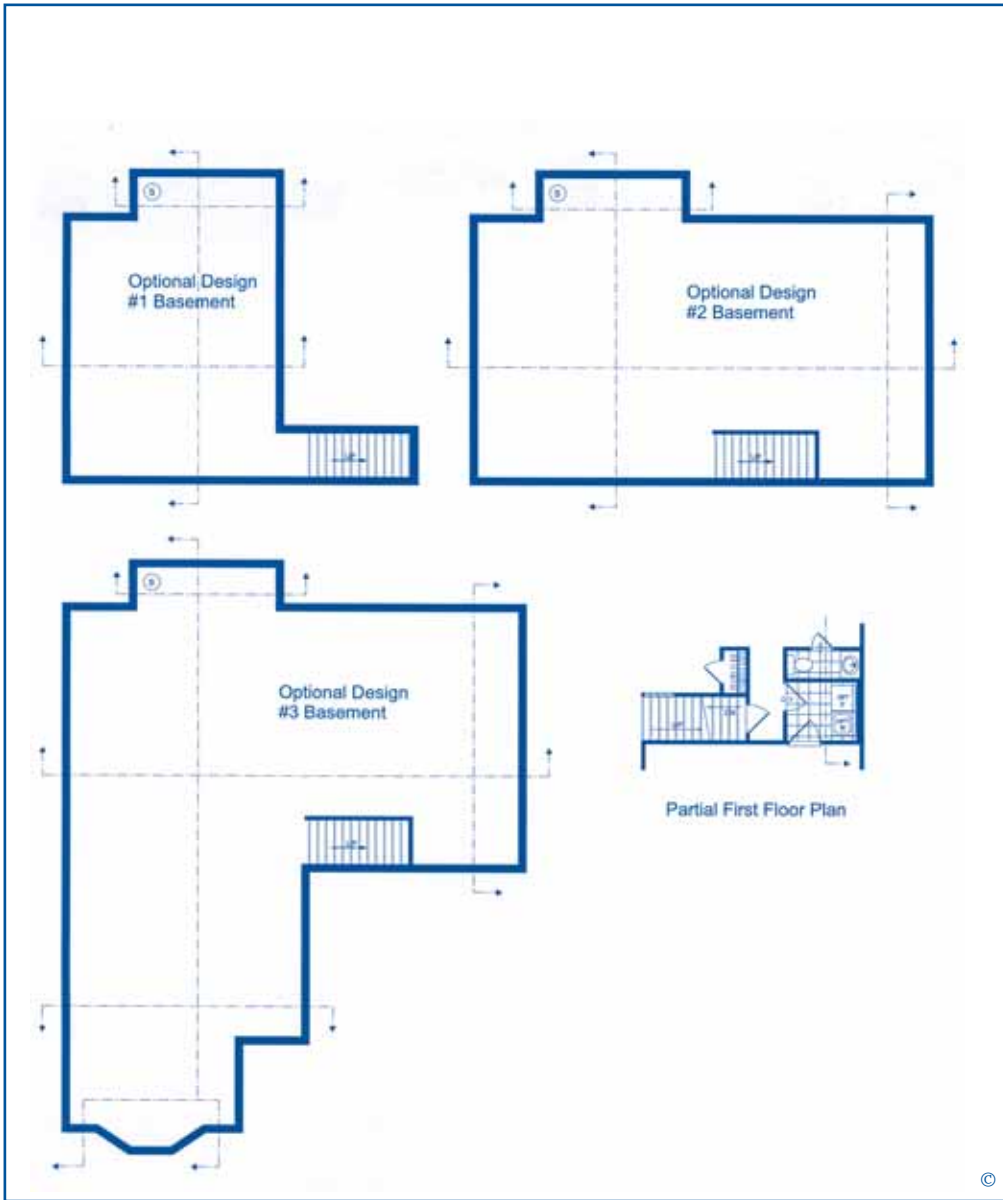
The Franklin "D"

4 Bedroom, Two-Story, 2 1/2 Baths, Spacious Living Room, Family Room and Dining Room with Dining Nook

Ask about our guaranteed existing home buyout program!



Copyright 2007. Paul Shoopman Home Building Group. The floor plan or optional basement brochure shown above is a conceptual floor plan which also has dotted lines showing potential extensions of the home. If these specific extension options are selected they will be added to the base price of the home listed on the HCI. The dotted lines are not a part of the base house price and is an additional charge. The elevation rendering is also a conceptual view of the home. Prices, plans, dimensions and specifications are subject to change without notice.



Community

Homesite # _____

Customer

PRINTED _____

SIGNATURE/DATE _____

Co-customer

PRINTED _____

SIGNATURE/DATE _____

SPECIAL NOTES:

(Check One)

Std. Concrete Slab _____ Opt. Crawl _____
 Opt. Bsmt #1 _____ Opt. Bsmt #2 _____
 Opt. Bsmt #3 _____

CUSTOMER SELECTED CHANGES AND OPTIONS

The Franklin "D"

4 Bedroom, Two-Story, 2 1/2 Baths, Spacious Living Room, Family Room and Dining Room with Dining Nook

BASEMENT PLAN

- Optional Design #1 Basement = 615 sq. ft.
(Includes three porcelain lights and two 4x10 heat registers)
- Optional Design #2 Basement = 1090 sq. ft.
(Includes five porcelain lights and three 4x10 heat registers)
- Optional Design #3 Basement = 1,589 sq. ft.
(Includes seven porcelain lights and four 4x10 heat registers)

**Ask about our
guaranteed existing home
buyout program!**



Copyright 2007. Paul Shoopman Home Building Group. The floor plan or optional basement brochure shown above is a conceptual floor plan which also has dotted lines showing potential extensions of the home. If these specific extension options are selected they will be added to the base price of the home listed on the HCI. The dotted lines are not a part of the base house price and is an additional charge. The elevation rendering is also a conceptual view of the home. Prices, plans, dimensions and specifications are subject to change without notice.